

Briefing Note:

Mental Health Services in Lancashire, Next Phase Agreed

This briefing is to provide further information about improvements to mental health services in Lancashire that have been agreed following a decision to conclude a long term programme of work.

Proposals were taken to CCG Governing Body meetings during July to agree a way forward and establish inpatient mental health services in Pennine Lancashire and Central Lancashire. Following an options appraisal that took into consideration previous consultation and engagement, it has been agreed that re-development work will take place at existing Trust facilities to provide an inpatient service at the Royal Blackburn Hospital site for Pennine Lancashire and a service for Central Lancashire will be provided from Chorley Hospital.

NB: The paper taken to the Central Governing Body Meetings set out a proposal for Chorley, South Ribble and Preston – the Ormskirk provision will remain in place for West Lancashire unless a better option comes forward. In West Lancashire, the Trust currently provides inpatient service for adults on the Scarisbrick Unit at Ormskirk Hospital.

The information provided gives an update on current plans, there is further work to do that will result in further changes and developments in mental health services.

Planned Changes in Central Lancashire

Extensive re-development work and expansion at Chorley Hospital will create an inpatient service providing 30 beds for adults aged 18 and over. Six psychiatric intensive care beds for women will also be provided from the facility which will become operational in 2018 following a major re-development. This will transform ward areas previously used by the Trust, providing private bedrooms and bathrooms, therapy spaces and access to garden areas.

A specialist service where new mothers who are experiencing mental illness can be cared for with their baby is also to be provided from the site. The perinatal unit will be one of only four new specialist services in the country and will provide 8 beds and a community service for women from across Lancashire and Cumbria. This will also become operational from 2018.

Investment has also been made into improving support for people who are experiencing mental health crisis. Willow House opened in Coppull in May 2017 to provide accommodation and support for people in a domestic environment with specially trained staff on hand, working in partnership with the Trust's crisis teams. In addition to this, investment has been made to establish a Crisis Support Unit at Royal Preston Hospital that provides 6 spaces where people can be assessed and supported when they are in crisis. This service opened in July 2017.

Planned Changes in Pennine Lancashire

The Pennine Lancashire inpatient service will be provided from the Royal Blackburn Hospital site. This follows enhancements to the existing service over the last few years and plans to consolidate all beds for the area there. Work is planned at the existing Blackburn site to accommodate 12 assessment beds that will be transferred from the Burnley site to Hillview by September 2018. Once these are in place, this will consolidate all beds for the area into one inpatient service for Pennine Lancashire and the Trust will move its inpatient service off the Burnley General hospital site. This is in line with previous consultation and engagement that was undertaken which identified the Royal Blackburn site as the preferred location for the Pennine Lancashire facility.

Land adjacent to the main Royal Blackburn site had been identified for a new development and the Trust had secured an option to purchase this land. However, due to the current economic climate, all NHS Trusts are now required to make the best use of resources and existing estate and other options had to be explored. Therefore the decision has been taken to make investments to improve the existing facilities at Blackburn and this will serve to enhance other developments that have been made there recently including improved accommodation for older adults and the provision of a crisis support unit.

On a broader locality basis, a facility will be opened in Burnley by the end of the year and delivered in partnership with the Richmond Fellowship to provide support to people who are experiencing a mental health crisis. It will provide short stay accommodation in a domestic setting with support from specially trained staff working alongside the Trust's crisis services. An Acute Therapy Service will also be provided in Pennine Lancashire, which is a psychological programme providing structured therapy in addition to practical, occupational, nursing and social support to people with low mood and who are deemed a risk of suicide and/or self-harm.

Future Provision by Locality

Central Lancashire

- Existing community services; talking therapies (IAPT), community mental health teams, complex care and treatment teams, crisis and home treatment teams, restart and rehab teams and A&E liaison services
- Chorley Hospital, (30 beds plus 6 female Psychiatric Intensive Care beds)
- Ormskirk Hospital, (Scarisbrick Unit: 20 beds and 4 male PICU)
- Acute Therapy Service for people in crisis
- Willow House, providing crisis support from a domestic facility in Coppull
- Crisis Support Unit, 6 places at Royal Preston Hospital
- Guild Lodge, medium and low secure inpatient services
- Specialist Perinatal (mother and baby) facility, 8 beds accessible to females from Lancashire and Cumbria*

Pennine Lancashire

- Existing community services; talking therapies (IAPT), community mental health teams, complex care and treatment teams, crisis and home treatment teams, restart and rehab teams and A&E liaison services
- Hillview/Pendleview, Royal Blackburn Hospital: (79 beds for Pennine Lancashire)

- Crisis Support Unit at Royal Blackburn Hospital
- A partnership with Richmond Fellowship will provide support to people in crisis from a domestic facility in Burnley
- Acute Therapy Service for people in crisis

Blackpool, Fylde and Wyre

- Existing community services; talking therapies (IAPT), community mental health teams, complex care and treatment teams, crisis and home treatment teams and A&E liaison services
- Crisis Support Unit, location TBC
- Home View (12 bed step up/down facility)
- The Harbour (154 beds for adults and older adults including 30 dementia beds*)

North Lancashire

- Existing community services; talking therapies (IAPT), community mental health teams, complex care and treatment teams, crisis and home treatment teams and A&E liaison services
- The Orchard, (18 beds for adults)
- The Cove, Children and Young People's CAMHS Tier 4 service (18 beds)*

***Highly Specialist Mental Health Provision**

- The Cove, inpatient service for children and young people (Heysham)
- Guild Lodge, provide medium and low secure services (Preston)
- Specialist dementia beds (Blackpool)
- Perinatal (mother and baby) inpatient service (Chorley)

Please visit our [directory of services](#) to see further details.

Background to the Changes

A public consultation took place in 2006 and directed that more support should be available in the community for people with mental illness and that a better standard of facilities should be available for those that do need an admission, from specialist co-located sites across the county.

Since then, the Trust has established a range of community teams and two of the four planned specialist inpatient services, The Harbour in Blackpool and The Orchard in Lancaster are operational. The recent decision by commissioners was to determine the sites for the Pennine Lancashire and Central Lancashire localities and the wider support services within the community. This took into consideration the 2006 consultation and other recent factors including the Sustainability and Transformation Plan for Lancashire and South Cumbria and the implementation of the Five Year Forward View for Mental Health on a local scale.

The Model of Care

Significant investment has been made into community services over the last 10 years so that the majority of people can be cared for outside of hospital when appropriate.

The Trust and commissioners have always been clear that the future model of care will be community based, supported with a pan-Lancashire network of beds. Inpatient services are important and necessary for those people who are not well enough to be supported in the community and it is important to highlight that this is a small minority of the whole population. The majority of people can be supported by community teams. The Trust has an extensive range of services to support people with mental health problems in the community.

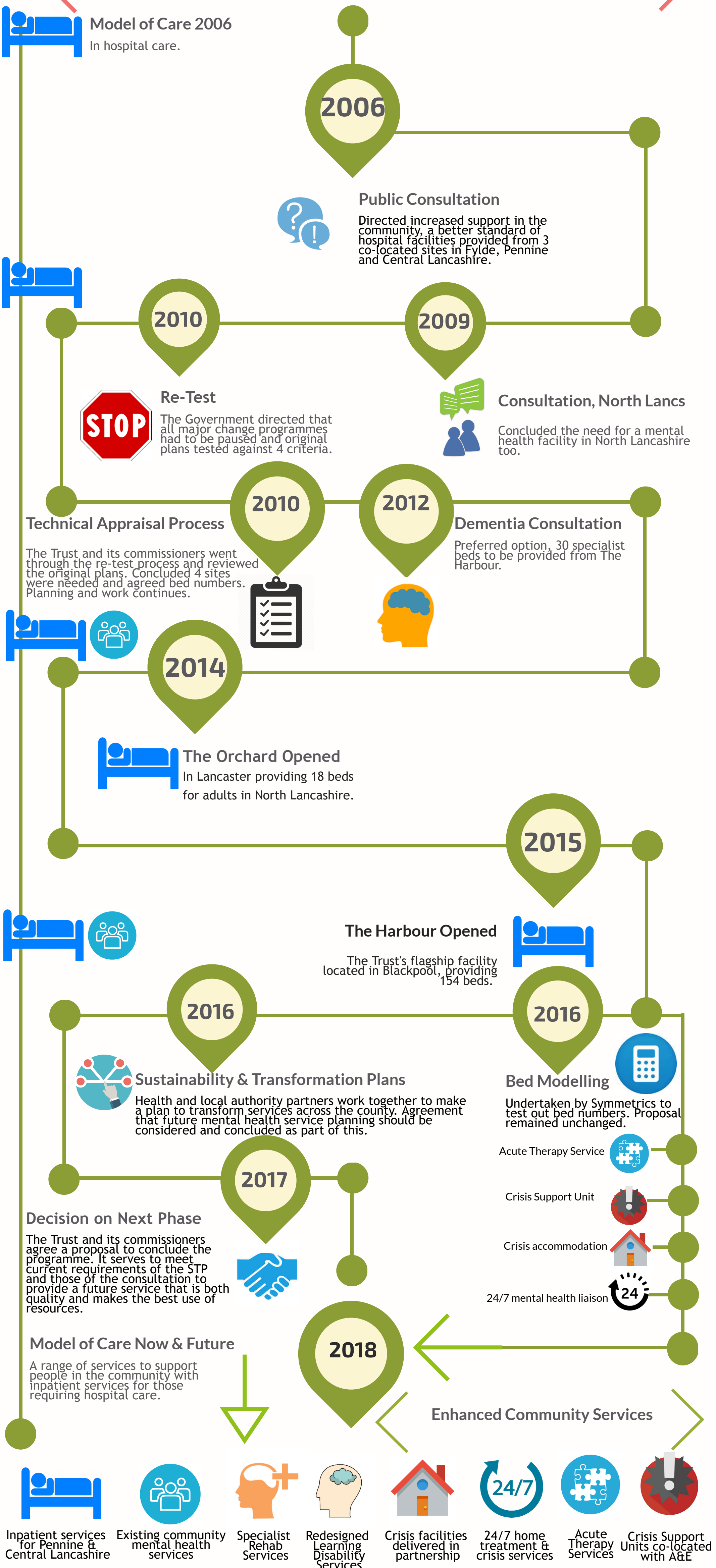
Attached

Please see the attached infographic which illustrates key milestones from 2006 until the present day in relation to the re-design of mental health services in Lancashire.

Mental Health Developments in Lancashire

The Journey So Far

In 2006, a joint Lancashire Commissioning body consulted on how mental health services should be improved and provided in the future. The changes would be made over a 10 year programme. These are the key milestones so far.



Excellence | Accountability | Respect | Teamwork | Integrity | Compassion